

GS2

ECCENTRIC GEAR STRAIGHTSIDE SERVO PRESSES

3,150 - 8,000 kN

355 - 900 US Tons Capacity



PRODUCT OVERVIEW

With capacity ranging from 3150-8000 kN, the GS2 Servo Press Series offers proven servo technology, performance and flexibility found in the full portfolio offering from Nidec Arisa. A trusted brand in the global metal forming industry, and one of the earliest innovators with servo technology Nidec Arisa has a demonstrated history and installation base on five continents. Metal formers around the world have come to rely on the precise and highly engineered turn-key systems from Nidec Arisa for consistent pressroom results.

GS2 Series Servo Presses enable you to respond quicker to business needs and industry trends through reduced lead times and competitive pricing.

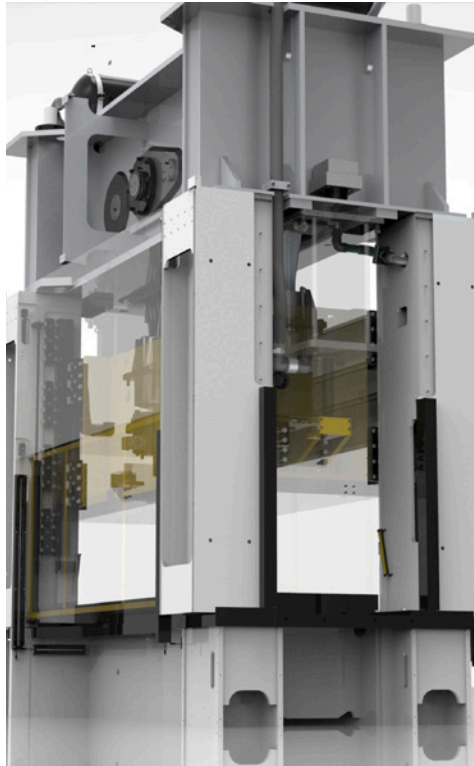


- 1** Precision kinematics enables quicker system response and higher production rates.
- 2** Eccentric wheels with double helical gearing for smooth operation, increased power transmission and higher durability.
- 3** Desch planetary gearbox reduces the drive train inertia for quicker acceleration and faster stopping times.
- 4** Minster proven robust design insures years of trouble free operation and lowest overall cost of ownership.
- 5** Siemens full energy management system provides maximum energy efficiency and lowest power cost per part.
- 6** Zero clearance slide guiding improves die set up and operation.

STANDARD FEATURES

Arisa Robust Design

- Heavy duty steel frame
- Maximum rigidity insuring consistent bottom-dead-center (BDC) repeatability
- All components are thoroughly analyzed



Low Inertia Drive Train / Design Pub

- Integrated assembly to obtain maximum performance
- Low friction bearings
- Double reduction planetary and pinion gearing
- Space saving, low inertia design (for minimum space)

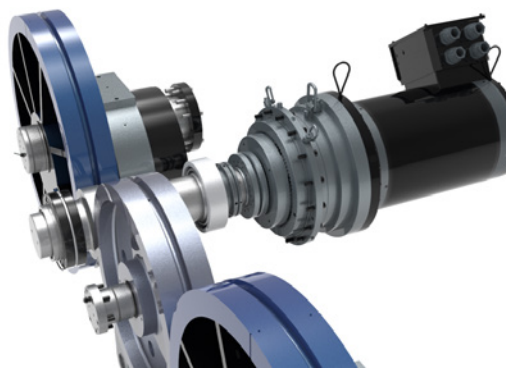
Double Helical Gear

- No axial force
- Smoother running, more power transmission with less noise
- Increased durability due to lower losses and friction wear
- Tighter tolerance resulting in precise kinematic drive train
- Recommended for use with high gear speed



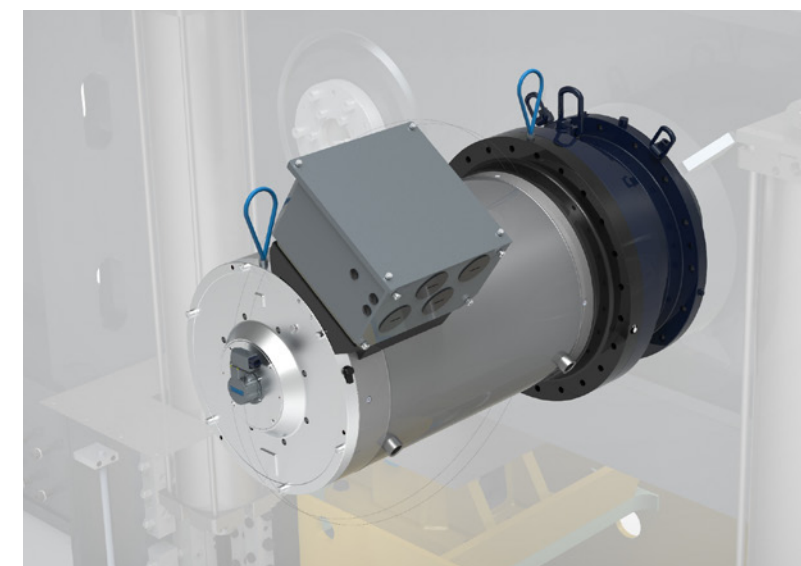
Eccentric Gear Transmission

- Precision kinematic / drive train
- Superior response results in higher performance
- Load is centralized directly through the most rigid part of the drive train.
- Compact design insures minimal deflection and superior response



Desch Reduction Planetary Gearbox

- Low inertia, high performance
- Maintenance free wet brake



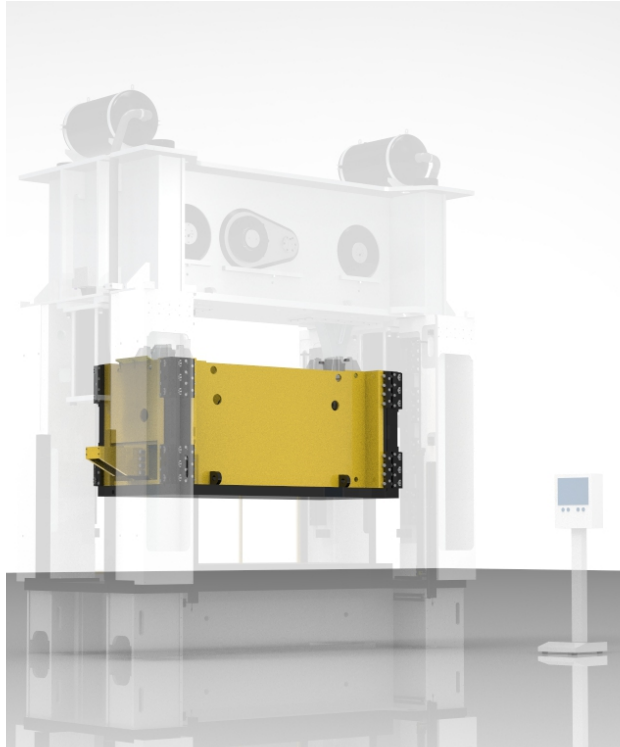
Siemens Servo Motor Technology

- State-of-the-art technology
- Flexible and programable profiles
- Low inertia
- Full energy management
- Low demand on the electric power grid
- Water cooled motor for higher performance

STANDARD FEATURES

Slide Guiding System

- Zero clearance slide guiding system
- Linear roller guides provide full stroke slide guiding accuracy
- Precision eight-point slide guiding
- Easy maintenance



Additional Standard Features

- Recirculating oil lubrication
- Electronic tool storage
- Hydraulic overload
- Fixed bolster
- 16 pole programmable limit switch
- Automatic counterbalance control
- Electronic shutheight control
- Powered die doors (front & rear)
- Front light curtains
- Component Temperature Monitoring
- Feed and Transfer Mounting Pads – RH & LH end
- Maintenance platform in the crown

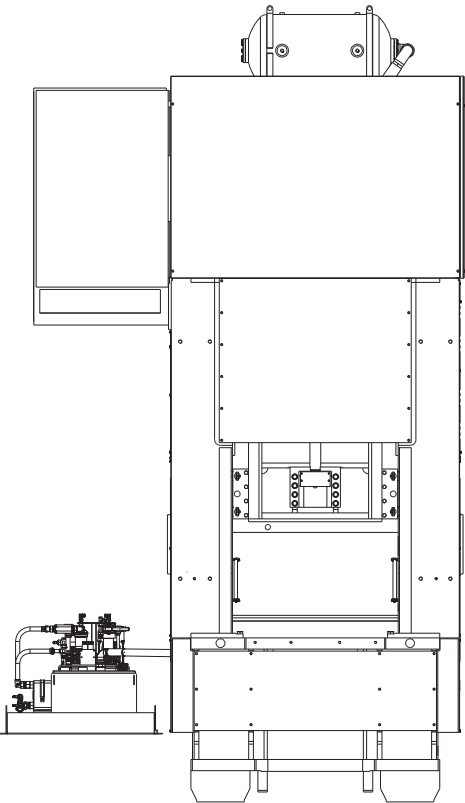
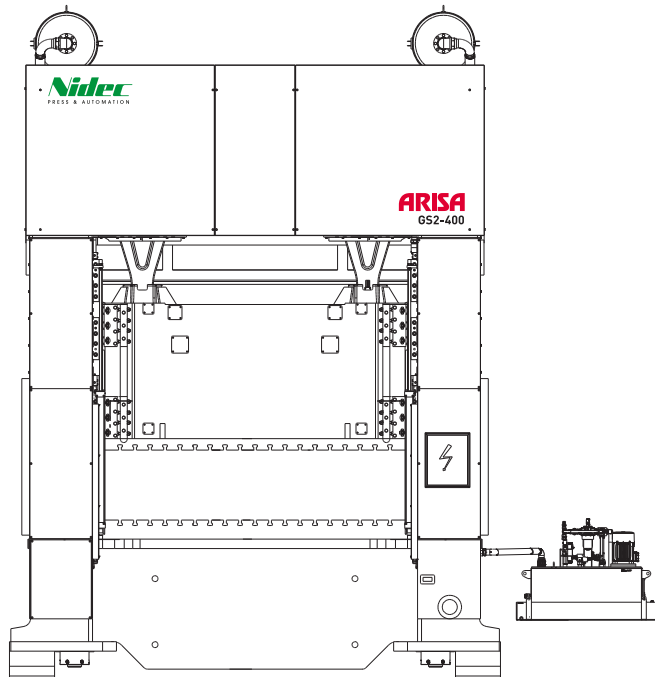
OPTIONAL FEATURES

Features

- Press isolation mounts
- 4 channel tonnage monitor + HOL Adj Valve
- 16 point die protection
- Automatic shutheight adjustment
- Die area lights



SPECIFICATION & DIMENSIONS



	GS2-300		GS2-400		GS2-630			GS2-800		
SPECIFICATIONS										
Capacity	3,150 kN 355 US tons		4,000 kN 450 US tons		6,300 kN 710 US tons			8,000 kN 900 US tons		
FRAME SPECIFICATIONS										
Bed & Slide, R-L	2,550 mm 100 in	3,050 mm 120 in	3,050 mm 120 in	3,650 mm 143 in	3,050 mm 120 in	3,650 mm 143 in	4,250 mm 167 in	3,650 mm 143 in	4,250 mm 167 in	4,850 mm 191 in
Bed & Slide, F-B	1,200 mm 47 in		1,400 mm 55 in		1,500 mm 59 in			1,800 mm 71 in		
Shutheight on Bolster (SDAU)	700 mm 27.6 in		750 mm 29.5 in		850 mm 33.5 in			900 mm 35.4 in		
Bolster Thickness	190 mm 7.5 in		190 mm 7.5 in		190 mm 7.5 in			235 mm 9.3 in		
Side Window Opening, F-B	1200 mm 47 in		1400 mm 55 in		1500 mm 59 in			1800 mm 71 in		
Weight (kg / lbs)	53,000 kg 116,845 lbs	60,000 kg 132,280 lbs	82,000 kg 180,780 lbs	93,000 kg 204,600 lbs	106,000 kg 233,700 lbs	125,000 kg 275,578 lbs	145,000 kg 319,670 lbs	TBD	TBD	TBD
STROKE & SPEED SPECIFICATIONS										
Stroke	300 mm 11.8 in		350 mm 13.8 in		400 mm 15.7 in			450 mm 17.7 in		
Speed Continuous (Max.)	71 SPM		53 SPM		55 SPM			45 SPM		
Speed Pendulum 150 mm (5.9 in)*	90 SPM		90 SPM		85 SPM			75 SPM		
Speed Pendulum 125 mm (4.9in)*	100 SPM		95 SPM		90 SPM			80 SPM		
Speed Pendulum 100 mm (3.9 in)*	110 SPM		105 SPM		100 SPM			90 SPM		
Speed Pendulum 80 mm (3.1 in)*	115 SPM		110 SPM		105 SPM			95 SPM		
Slide Adjustment	300 mm 11.8 in		350 mm 13.8 in		400 mm 15.8 in			400 mm 15.8 in		
Max Upper Die Weight	3,000 kg 6,615 lbs		6,000 kg 13,200 lbs		7,000 kg 15,430 lbs			10,000 kg 22,045 lbs		
CONTROL SPECIFICATIONS										
Servo Motor and Drive Platform	Siemens		Siemens		Siemens			Siemens		
Energy Management System	Full		Full		Full			Full		
Servo Power Infeed	80 kW 107 HP		120 kW 160 HP		160 kW 215 HP			235 kW 315 HP		
Energy (@40 SPM)	65 kJ 287 In-Tons		120 kJ 530 In-Tons		110 kJ 486 In-Tons			210 kJ 928 In-Tons		

* Stroke rate depends on profile of stroke and press mechanical properties.



One Brand: A World of Resources

Nidec Press & Automation is the full service pressroom provider of choice for businesses in more than 90 countries and on six continents. Comprised of leading press room product brands, we ensure a complete offering of machinery, services and technology to meet your exact needs, enabling you to rely on one source.

Discover the freedom to achieve, to maximize and to drive your operation to exceed your goals. At Nidec Press & Automation, your success is the core of our focus and how we design our solutions to meet the rigid needs of the metal forming industry.

Choosing to work with us means you gain a constant resource with a global footprint, the brightest minds behind our solutions, and backed by regionally based OEM support ready to work as a natural extension of your team.

Our promise to you is simple:
We're with you whenever and wherever
business takes you.



MACHINERY

- Turn Key Systems
- Individual Components
- System/Tech Upgrades
- Industry 4.0 Software Upgrades
- Integrated Controls

AUTOMATION

METAL FORMING PRESS APPLICATIONS

- Mechanical
- Servo
- Transfer
- High-Speed & Electrical
- Electrical Vehicle (EV)
- Lamination
- Container Cupping
- Container End-Conversion
- Container Shell
- Gap/D-Frame

- Press Tending / Robotics
- Integrated Transfers
- High Speed Servo Feeds
- High Speed Gripper Feeds
- Heavy-Duty Coil Lines

GLOBAL SERVICE NETWORK

- Field Service
- Remanufacturing
- Spare Parts
- Technical Service
- Training
- Planned Maintenance
- Inspection & Audit
- Relocation
- Upgrade Services
- Engineering Services



One Brand: A World of Resources

A single source solution that will help you find the efficiencies you want — all from the products, services and technology of Nidec Press & Automation.

nidecpa.com